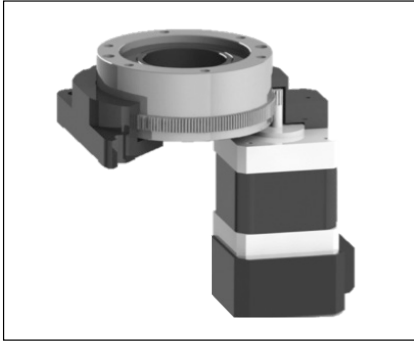


TRI Series

중공 로터리





Features

- 크로스 롤러베어링 적용
- 모터 피니온 일체형

주문 형식

TRI — 130 — 18 — TDB2000 - 60 - V24 - L

① ② ③ ④

① 시리즈명

② 모터크기(mm)

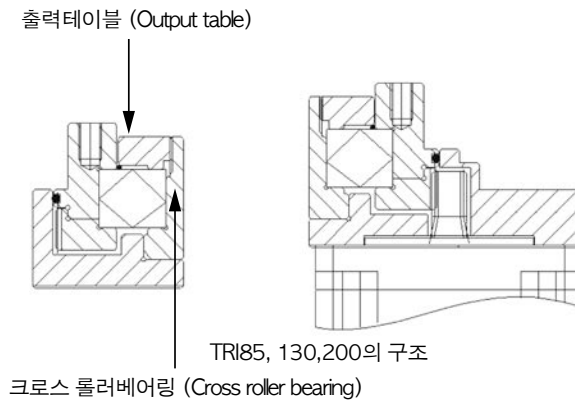
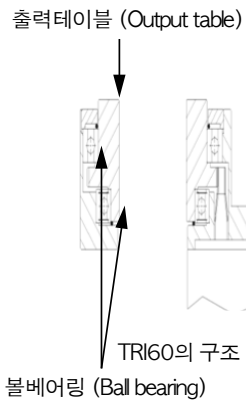
모터크기(mm)	입력전압
60	60
85	85
130	130
200	200

③ 감속비

④ 모터길이(mm)

TDB2000 SERIES
TDB3000 SERIES
TDCI SERIES
※ 서보 & 스텝 모터 드라이브 (P. 290 참고)

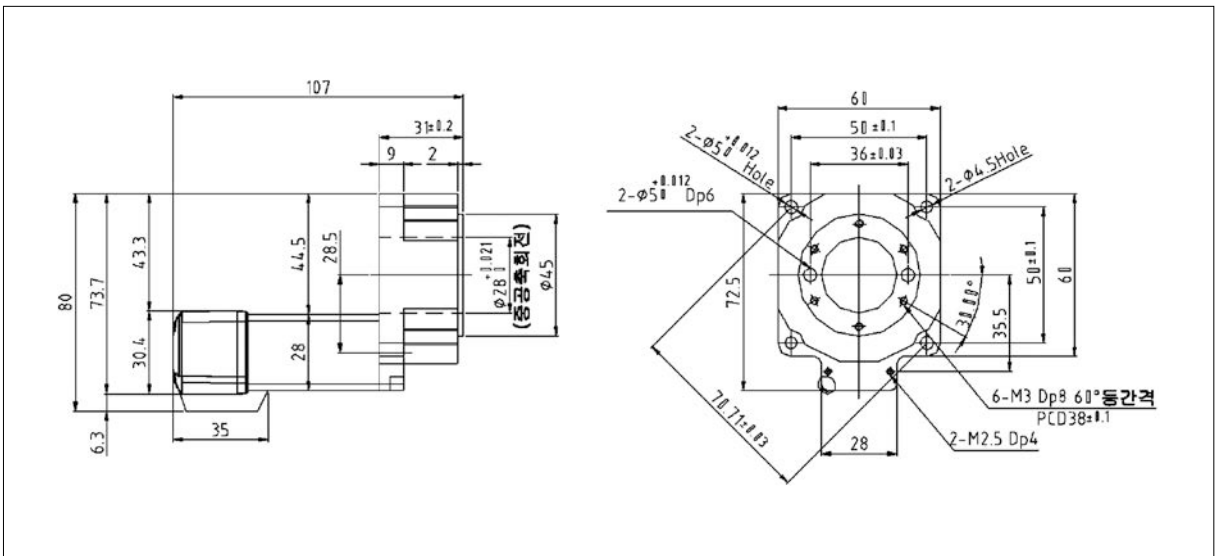
TRI60의 볼베어링 (ERI60 has a ball bearing)



TRI - 60 제품사양

사양 (Specification)	특징(feature)	
1. 출력TABLE 지지 BEARING(Type of output table supporting bearing)	BALL BEARING	
2. 허용TORQUE (Permissible Torque) (Nm)	1	
3. 관성MOMENT (Inertia moment) (J:Kg.m ²)	3,625 x 10 ⁻⁷	
4. 허용 회전속도 (Permissible speed) (rpm)	200	
5. 감속비 (Reduction gear ratio)	18	
6. 최대유지력(Nm)	전원ON (Power)	0.6
	전원OFF (Power)	0
7. 분해능 (Resolution)	10000(0.036°), 20000(0.018°), 32000(0.01125°), 40000(0.009°), 65536(0.0054°)	
8. 제어전원 (Control voltage)	DC24V , DC48V	
9. 반복위치결정 정도 (Repetitive positioning accuracy) (SEC)	±15sec(0.004°)	
10. LOST MOTION (min)	2 (0.033°)	
11. 각도전달오차 (Angular transmission error) (min)	3(0.05°)	
12. 허용THRUST하중 (Permissible thrust load) (N)	100	
13. 허용MOMENT하중 (Permissible moment load) (Nm)	2.35	
14. 출력TABLE면진동 (Runout of output table surface) (mm)	0.03	
15. 출력TABLE내(외)경진동 (Runout of output table inner/ outer diameter) (mm)	0.03	
16. 출력TABLE평행도 (Paralleism of output table) (mm)	0.05	
17. 보호등급 (Degree of protection)	IP40 , IP20	
18. ACTUATOR부 무게 (Weight) (Kg)	0.5	

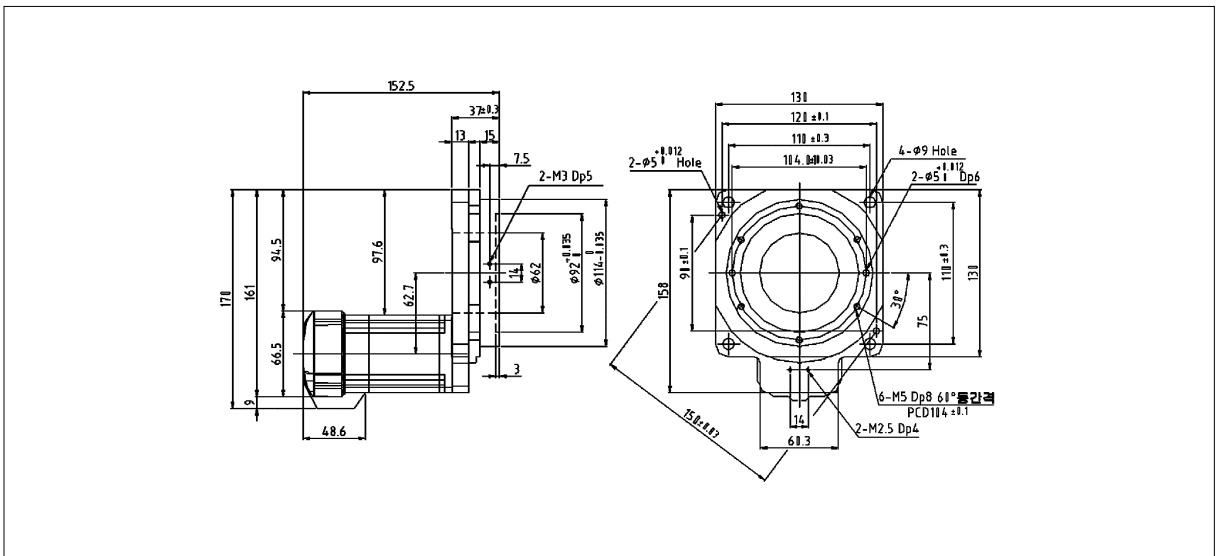
TRI - 60 구조도



TRI - 85 제품사양

사양 (Specification)		특 징(feature)
1.출력TABLE 지지 BEARING(Type of output table supporting bearing)		CROSS-ROLLER BEARING
2.허용TORQUE (Permissible Torque) (Nm)		2.9
3.관성MOMENT (Inertia moment) (J:Kg,m2)		16294×10^{-7}
4.허용 회전속도 (Permissible speed) (rpm)		200
5. 감속비 (Reduction gear ratio)		18
6. 최대유지력(Nm)	전원ON (Power)	2.2
	전원OFF (Power)	0
7.분해능 (Resolution)		10000(0.036°), 20000(0.018°), 32000(0.01125°), 40000(0.009°), 65536(0.0054°)
8.제어전원 (Control voltage)		DC24V , DC48V
9.반복위치결정 정도 (Repetitive positioning accuracy) (SEC)		$\pm 15\text{sec}(0.004^\circ)$
10.LOST MOTION (min)		2 (0.033°)
11.각도전달오차 (Angular transmission error) (min)		3(0.05°)
12.허용THRUST하중 (Permissible thrust load) (N)		500
13.허용MOMENT하중 (Permissible moment load) (Nm)		10
14.출력TABLE면진동 (Runout of output table surface) (mm)		0.015
15.출력TABLE내(외)경진동 (Runout of output table inner/outer diameter) (mm)		0.015
16.출력TABLE평행도 (Paralleism of output table) (mm)		0.03
17.보호등급 (Degree of protection)		IP40 , IP20
18.ACTUATOR부 무게 (Weight) (Kg)		1.3

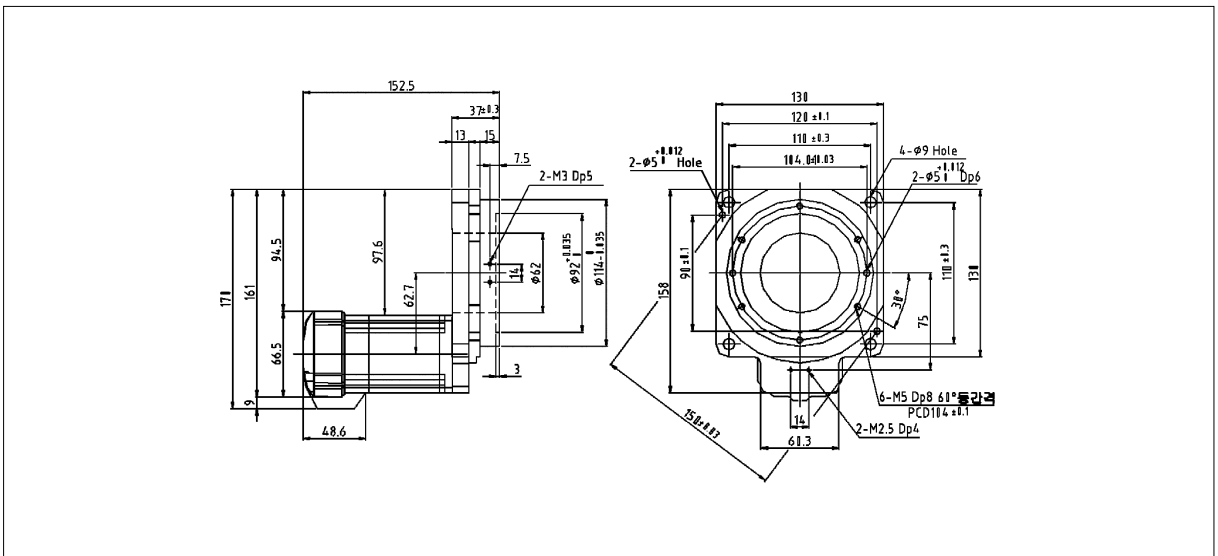
TRI - 85 구조도



TRI - 130 제품사양

사양 (Specification)		특 징(feature)
1.출력TABLE 지지 BEARING(Type of output table supporting bearing)		CROSS-ROLLER BEARING
2.허용TORQUE (Permissible Torque) (Nm)		11
3.관성MOMENT (Inertia moment) (J:Kg.m2)		122592 x 10 ⁻⁷
4.허용 회전속도 (Permissible speed) (rpm)		200
5. 감속비 (Reduction gear ratio)		18
6. 최대유지력(Nm)	전원ON (Power)	16
	전원OFF (Power)	0
7.분해능 (Resolution)		10000(0.036°), 20000(0.018°), 32000(0.01125°), 40000(0.009°), 65536(0.0054°)
8.제어전원 (Control voltage)		DC24V , DC48V
9.반복위치결정 정도 (Repetitive positioning accuracy) (SEC)		±15sec(0.004°)
10.LOST MOTION (min)		2 (0.033°)
11.각도전달오차 (Angular transmission error) (min)		3(0.05°)
12.허용THRUST하중 (Permissible thrust load) (N)		2000
13.허용MOMENT하중 (Permissible moment load) (Nm)		60
14.출력TABLE면진동 (Runout of output table surface) (mm)		0.015
15.출력TABLE내(외)경진동 (Runout of output table inner/outer diameter) (mm)		0.015
16.출력TABLE평행도 (Paralleism of output table) (mm)		0.03
17.보호등급 (Degree of protection)		IP40 , IP20
18.ACTUATOR부 무게 (Weight) (Kg)		2.8

TRI - 130 구조도



TRI - 200 제품사양

사양 (Specification)		특 징(feature)
1.출력TABLE 지지 BEARING(.Type of output table supporting bearing)		CROSS-ROLLER BEARING
2.허용TORQUE (Permissible Torque) (Nm)		47,5
3.관성MOMENT (Inertia moment) (J:Kg.m ²)		915290 x 10 ⁻⁷
4.허용 회전속도 (Permissible speed) (rpm)		110
5. 감속비 (Reduction gear ratio)		18
6. 최대유지력(Nm)	전원ON (Power)	50
	전원OFF (Power)	0
7.분해능 (Resolution)		10000(0.036°), 20000(0.018°), 32000(0.01125°), 40000(0.009°), 65536(0.0054°)
8.제어전원 (Control voltage)		DC24V , DC48V
9.반복위치결정 정도 (Repetitive positioning accuracy) (SEC)		±15sec(0.004°)
10.LOST MOTION (min)		2 (0.033°)
11.각도전달오차 (Angular transmission error) (min)		3(0.05°)
12.허용THRUST하중 (Permissible thrust load) (N)		4000
13.허용MOMENT하중 (Permissible moment load) (Nm)		120
14.출력TABLE면진동 (Runout of output table surface) (mm)		0,015
15.출력TABLE내(외)경진동 (Runout of output table inner/outer diameter) (mm)		0,03
16.출력TABLE평행도 (Paralleism of output table) (mm)		0,05
17.보호등급 (Degree of protection)		IP40 , IP20
18.ACTUATOR부 무게 (Weight) (Kg)		10

TRI - 200 구조도

